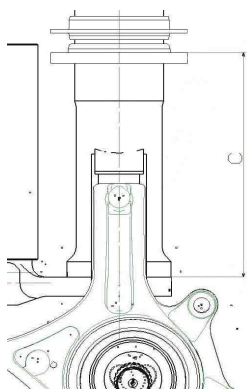
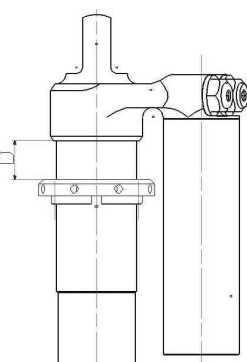


**CITROËN**  
RACING

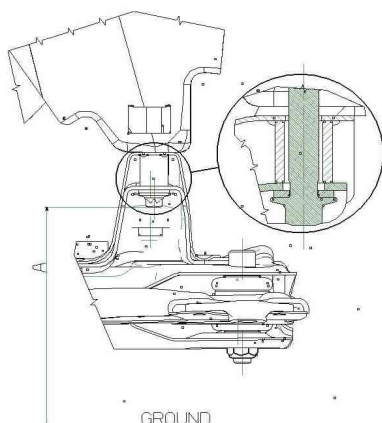
Front spring cup measurement



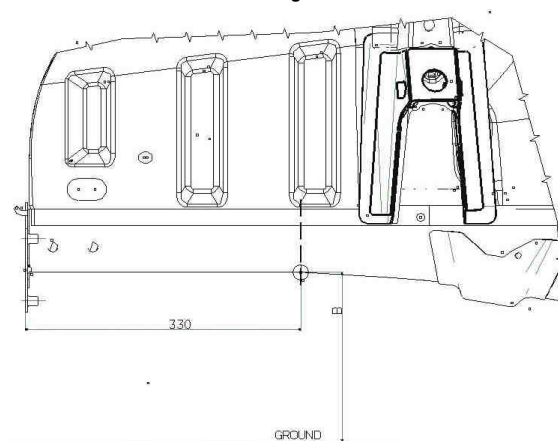
Rear spring cup measurement



Front ride height measurement



Rear ride height measurement



# C2R2MAX

## SETUP Sheet

Event		Car N° (chassis)	R2 Max	<b>SET-UP "BAD GRAVEL"</b>
Date		Surface	Gravel	
Crew		Weather conditions	Dry	

### General informations

DIMENSIONS	Rims	6 x 15		Setup pressure	bars	2	Target (*)
	Tyres	BF Goodrich 195/65-15					Front : 2,4 bars
							Rear : 2,2 bars
	(*) : The target means a tyre pressure just at the end of a 15kms long special stage.						
	Weight balance per wheel (with 20L)	kg	Front L	Front R	Ballast detail	Weight on front	%
		kg	Rear L	Rear R		Delta L/R	Kg
	Crew weight	kg	Driver	Navigator		Diago delta.	Kg
	Total weight	kg			1180 min	Balast	Kg
	Total weight without crew	kg			1030 min		

### Front axle specification

SUSPENSION	Main spring	daN/mm	4,5				
	Intermediate spring	daN/mm	0,4				
	Shock absorber	spec	ABO-RT-070151	Pressure	bars	12	Clics base (c / C / D)
	Shock setting		Hydraulic bump stop			-15	Clics
	Anti roll bar	mm	ø 18 full				
GEOMETRY	Anti roll bar link length	mm	Left	245 mm (the second has to be adjusted)			Right
	Wheel spacer	mm	Left	5mm wheel spacer, both sides			Right
	Ride height (A)	mm	Left	305mm, subframe bolt			Right
	Distance between spring cup	mm	Left	1 rev => 1,5 mm ride height			Right
	Toe "in"	mm	Left	0 mm total, toe in on brakes			Right
	Camber	°/°	Left	1°30'			Right
	Steering joint ball length	mm	Left	1 rev => 4,8 mm at the wheel			Right
	Caster	°/°	Left				Right

### Rear Axle specifications

SUSPENSION	Main Spring	daN/mm	3,8				
	Intermediate spring	daN/mm	0,5	S1600 spec			
	Shock absorber	spec	ABO-RT-070144	Pressure	bars	12	Clics base (c / C / D)
	Shock setting		Hydraulic bump stop			-1,5 revs	Clics
	Rear axle crossmember	mm	4/20,5				
GEOMETRY	Wheel spacer	mm	Left	spacer of 5mm in option			Right
	Ride height (B)	mm	Left	420mm on rear body cross member			Right
	Spring cup measurement (D)	mm	Left	1 rev => 2 mm ride height			Right
	Wheel base with crew	mm	Left				Right
	Toe in	mm	Left	5 mm "in" Total			Right
	Toe in shim	°/°	Left	"-" means less toe in			Right
	Camber	°/°	Left	1°30'			Right
	Camber shim	°/°	Left	"-" means less camber			Right

### Steering specifications

BRAKES	Caliper (Piston Ø / nb)	mm	Left	42/38	4 pistons	31,8	2 pistons	Rear
	Diameter / Thickness (bd new)	mm	Left	266/22		280 / 8		Rear
	Pads (Mark / model)	spec	Left	FERODO DS3000		FERODO DS3000		Rear
	Master cylinder (Ø)	inch	Principal	22 mm	Without servo		0.700"	HB
	Rear brake pressure limiter	spec		Bendix	Cutting	bars		

### Steering specifications

STE	Steering rack	spec		BCSP4000ZN, CITROEN Racing shop			
	Steering rack height setting	mm	Left				Rear
	Power steering pump	spec		BCSP4007ZX CITROEN Racing shop	Ø Caliber		Following driver

### Gearbox specifications

GEAR	Gears	12 x 36	16 x 34	17 x 28	20 x 27	21 x 24	
	Final ratio (speed in accordance)	13x54 (long, 195km/h)		12x53 (medium, 183km/h)		12x57 (short, 171km/h)	
	Differential	Accel	30	Deccel	90	Preload	9 m.daN quadridisque

**IMPORTANT:** By the "R" rules, the F.I.A limits the low ride height. Please, check the page 1 and 2 of the 28/02 VR2B sheet to know the measurement values, and how / where measuring it.



# C2R2MAX



## Weight balance setup sheet

### Configuration conditions :

20 liters of fuel in the tank.  
1 only spare wheel  
4 wheels equipped with brand new racing tyres P = 2 bars.  
Inboard tool set installed (tools, jack, makita, spare parts)  
Front anti-roll bar disconnected  
Driver (helmet, shoes,...) installed.  
Co-driver (helmet, shoes,...) installed.

### R2 Homologation weight :

1030 kg without crew  
1180 kg with the crew

### Ballast :

### Sump guard :

### Inside :

**FRONT AXLE WEIGHT TARGET : LESS THAN 1 KG**

**Example :** Left front wheel 364 kg / Right front wheel 363,5 kg

Front Left	
Mass	Kg
Ride Height	
Target (A)	mm
Measure (A)	mm
Spring cup measurement	
Measure (C)	mm



Front Right	
Mass	Kg
Ride Height	
Target (A)	mm
Measure (A)	mm
Spring cup measurement	
Measure (C)	mm

Rear Left	
Mass	Kg
Ride Height	
Target (B)	mm
Measure (B)	mm
Spring cup measurement	
Measure (D)	mm

Rear Right	
Mass	Kg
Ride Height	
Target (B)	mm
Measure (B)	mm
Spring cup measurement	
Measure (D)	mm

**REAR AXLE WEIGHT TARGET : LESS THAN 5 KG**

**Example :** Rear left wheel 228 kg / Rear right wheel 224 kg

### Front ride height measurement

### Front spring cup measurement

### Rear ride height measurement

### Rear spring cup measurement

